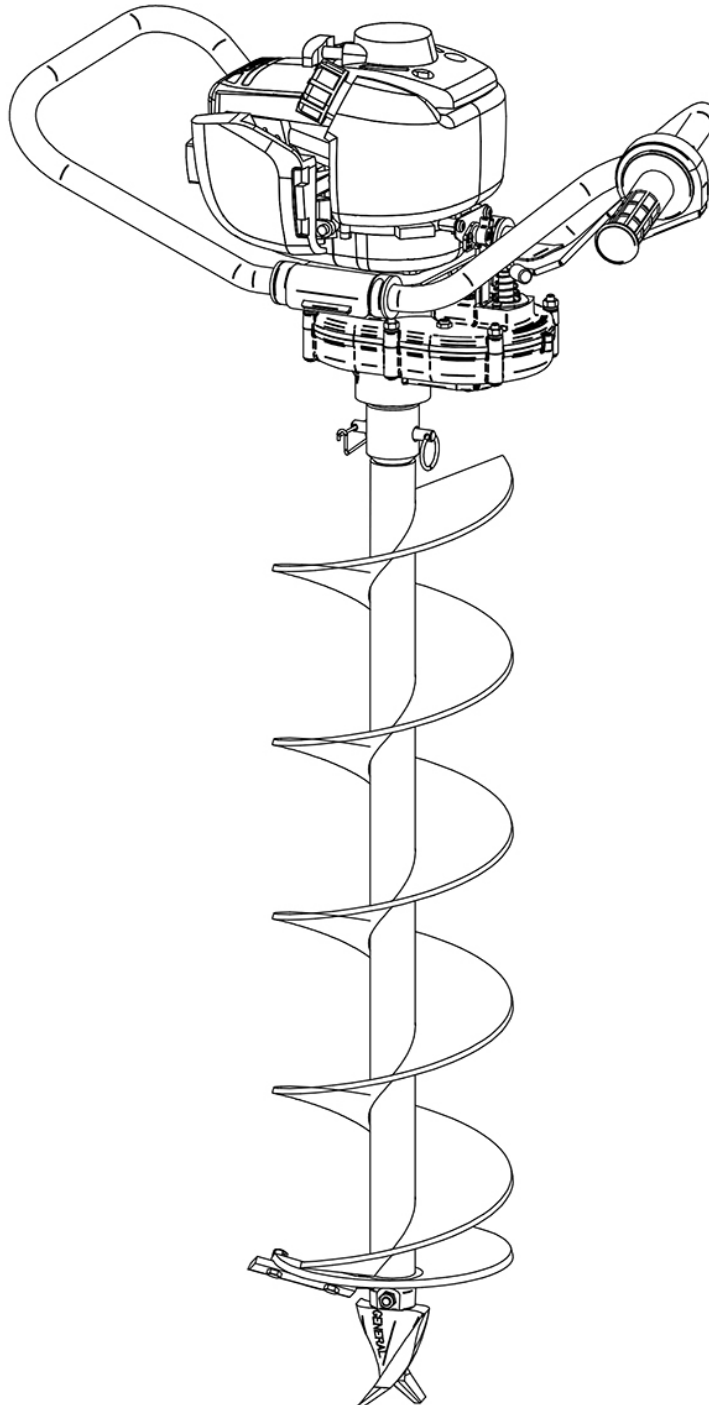
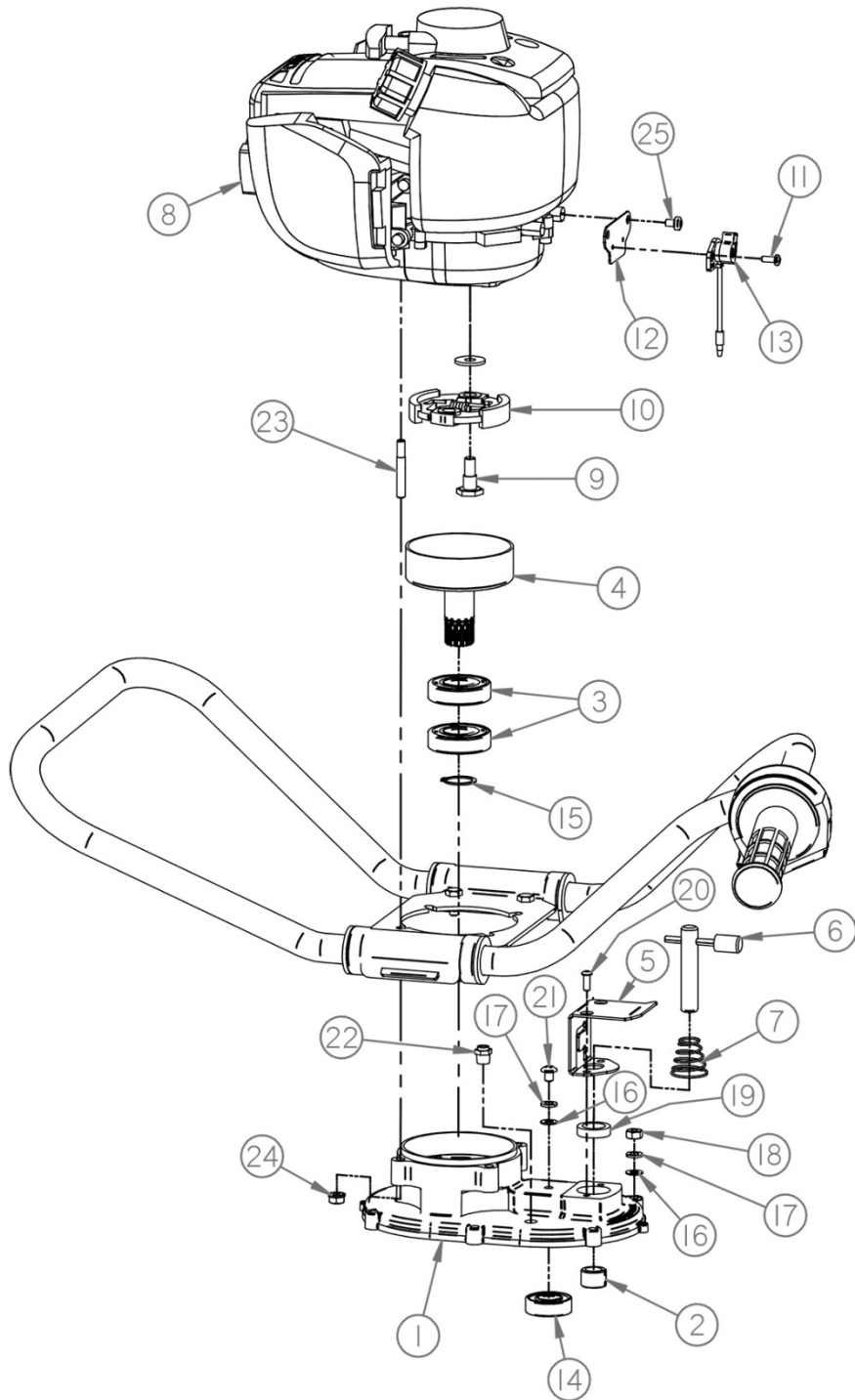


*Replacement Parts Diagram  
242H Hole Digger  
Equipped With Honda GX35 Engine*



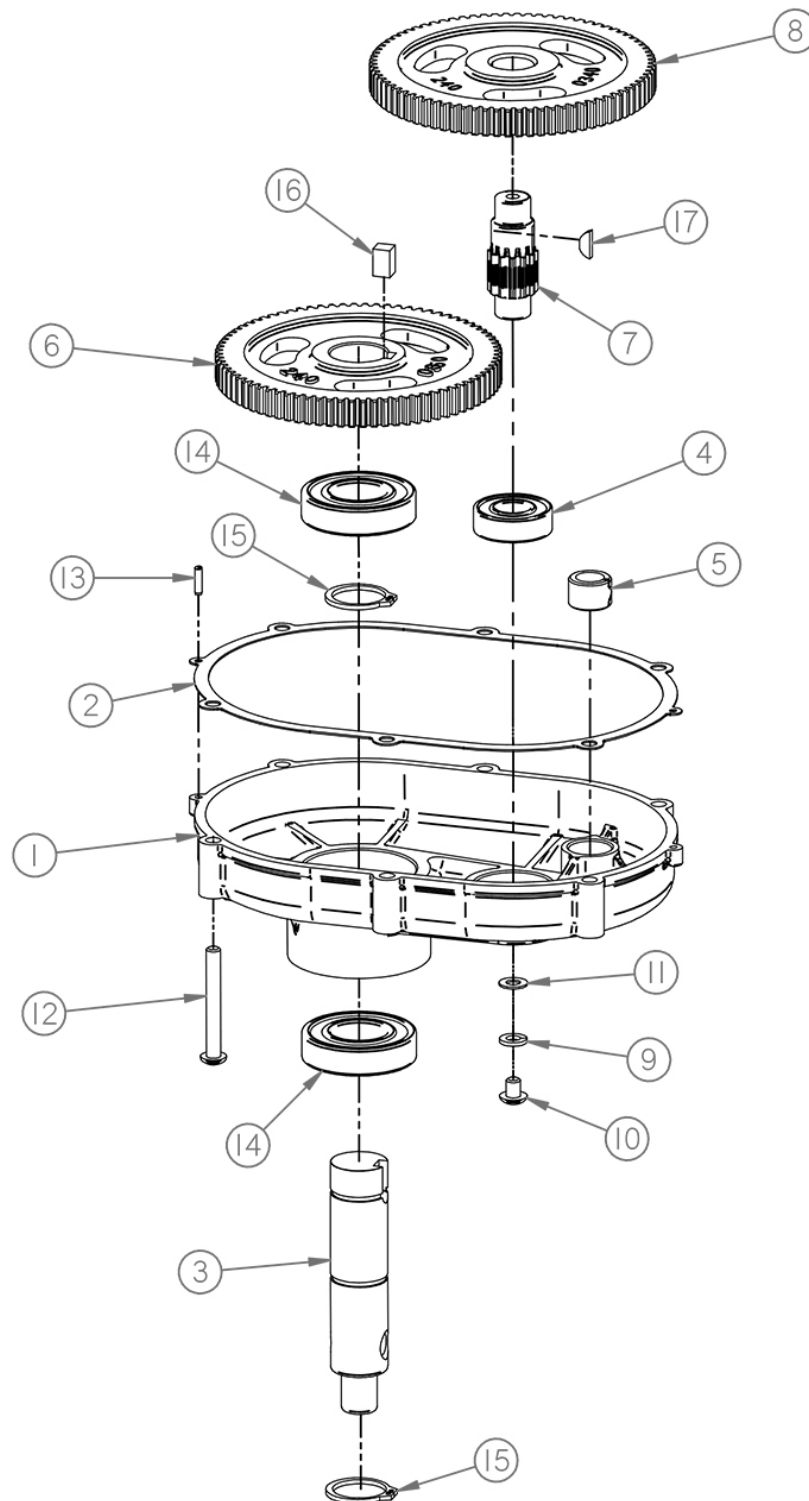
*Replacement Parts Diagram  
Transmission Cover Assembly  
242H Hole Digger  
[Beginning with Serial Number 174809]*



*Replacement Parts Diagram  
Transmission Cover Assembly  
242H Hole Digger  
[Beginning with Serial Number 174809]*

Reference Number	Part Number	Description	Quantity
1	242-0130A	Assembly, Cover, Transmission, (Includes Ref. 2, 3 & 14)	1
2	235-0140	Bushing, Spring-Type	1
3	FCS16-0331	Bearing, Support	2
4	242-0160	Drum, Clutch	1
5	235-0230	Plate, Pin, Lock	1
6	235-0220	Assembly, Pin, Lock	1
7	235-0110	Spring, Pin, Lock	1
8	GX35NTT3-BLK	Engine, Honda, GX35	1
9	240-0180	Screw, Cap, Retaining, Clutch	2
10	240-0170	Assembly, Rotor/Shoe, Clutch	1
11	240H-0340	Screw, Phillips, #8-12, Z	2
12	240H-0360	Bracket, Switch, ZY	1
13	240H-0350PAK2	Pak2, Switch, Engine, On/Off	1
14	99502H	Bearing, Ball	1
15	5100-088	Ring, Snap, External	1
16	AN-960-416L	Washer, Flat, 1/4, ZY	7
17	16040000	Washer, Lock, 1/4, ZY	7
18	18040000	Nut, Hex, 1/4-20, ZY	6
19	471442	Seal, Oil	1
20	55030400	BHSCS, #10-24 X 1/2, ZY	2
21	37040200	PHMS, 1/4-20 X 5/16, ZY	1
22	5677	Valve, Relief	1
23	240-0200	Stud, Mounting, M6 X 1/4-28	4
24	12040001	Nut, Hex, K-Lock, 1/4-28, ZY	4
25	90050-ZE1-000	PHST, M5 X 8, Z	2

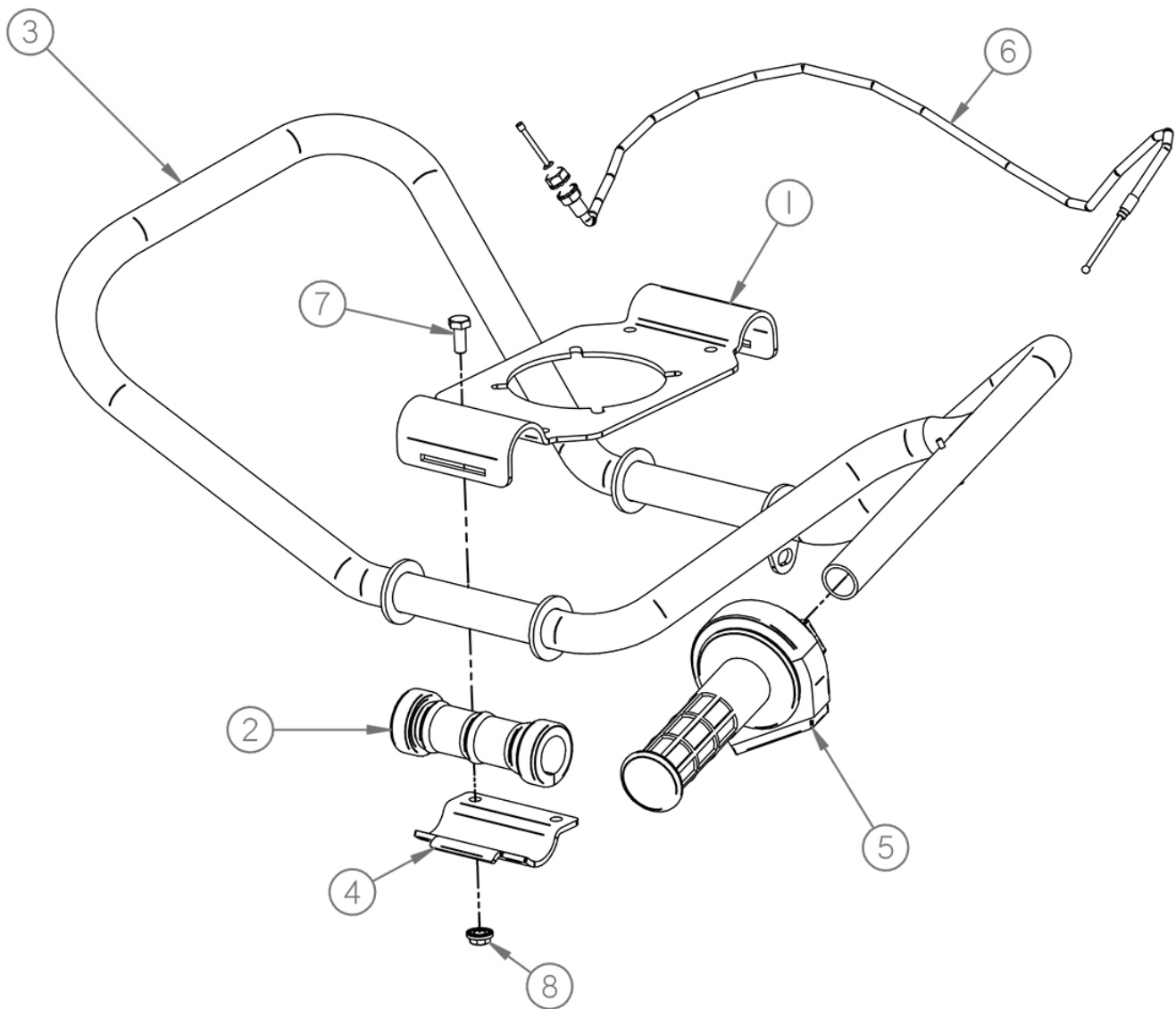
*Replacement Parts Diagram  
Transmission Case Assembly  
242H Hole Digger  
[Beginning with Serial Number 174809]*



*Replacement Parts Diagram  
 Transmission Case Assembly  
 242H Hole Digger  
 [Beginning with Serial Number 174809]*

Reference Number	Part Number	Description	Quantity
1	242-0120A	Assembly, Case, Transmission, (Includes Ref. 4 & 5)	1
2	240-0100PAK2	Pak2, Gasket, Transmission	1
3	242-0330	Shaft, Drive, 1RD	1
4	99502H	Bearing, Ball	1
5	235-0140	Bushing, Spring-Type	1
6	240-0350	Gear, Secondary	1
7	210-0310	Gear, Pinion, Secondary	1
8	240-0340	Gear, Primary	1
9	16040000	Washer, Lock, 1/4, ZY	1
10	37040200	PHMS, 1/4-20 X 5/16, ZY	1
11	AN-960-416L	Washer, Flat, 1/4, ZY	1
12	34041600	Phrhms, 1/4-20 X 2, ZY	6
13	51020400	Pin, Dowl, 1/8 X 1/2	2
14	99R16	Bearing, Ball	2
15	5160-98	Ring, Snap	2
16	63050400	Key, Drive, Square, 5/16 X 1/2	1
17	3	Key, Woodruff, Alloy	1

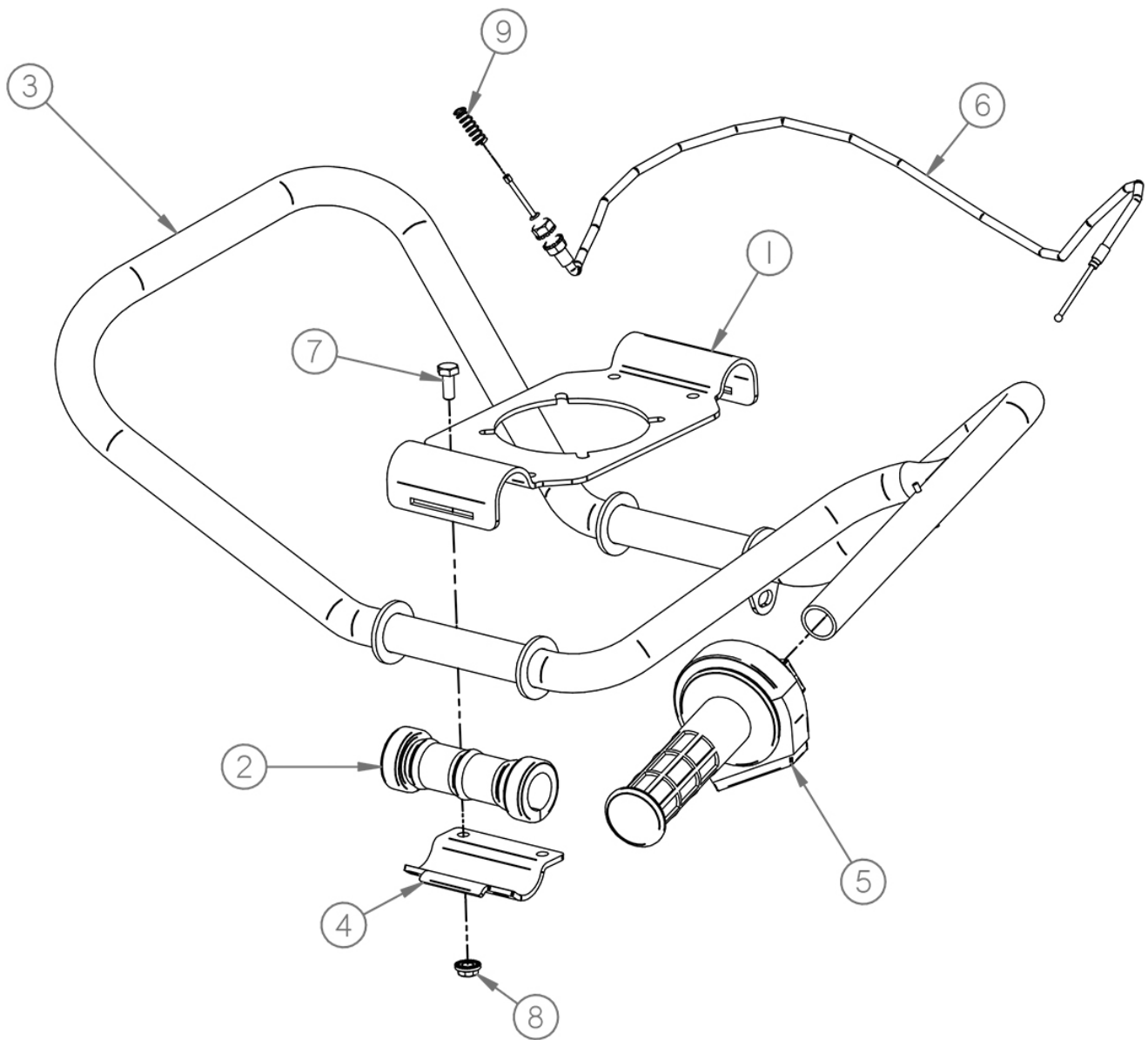
# Replacement Parts Diagram Operator Handle Assembly 242H Hole Digger [Used With Serial Number 174809 Thru 179766]



*Replacement Parts Diagram  
 Operator Handle Assembly  
 242H Hole Digger  
 [Used With Serial Number 174809 Thru 179766]*

Reference Number	Part Number	Description	Quantity
1	242-0050	Bracket, Handle	1
2	242-0070	Bushing, Isolator, Handle	2
3	242-0090	Weldment, Handle, Operator	1
4	242-0060	Clamp, Handle	2
5	310-0030	Assembly, Control, Throttle	1
6	240H-0080PAK2	Pak2, Cable, Throttle	1
7	15040500	HHCS, 1/4-20 X 5/8, ZY	4
8	86040000	Nut, Hex, Flange, 1/4-20, ZY	4

# Replacement Parts Diagram Operator Handle Assembly 242H Hole Digger [Beginning with Serial Number 179767]

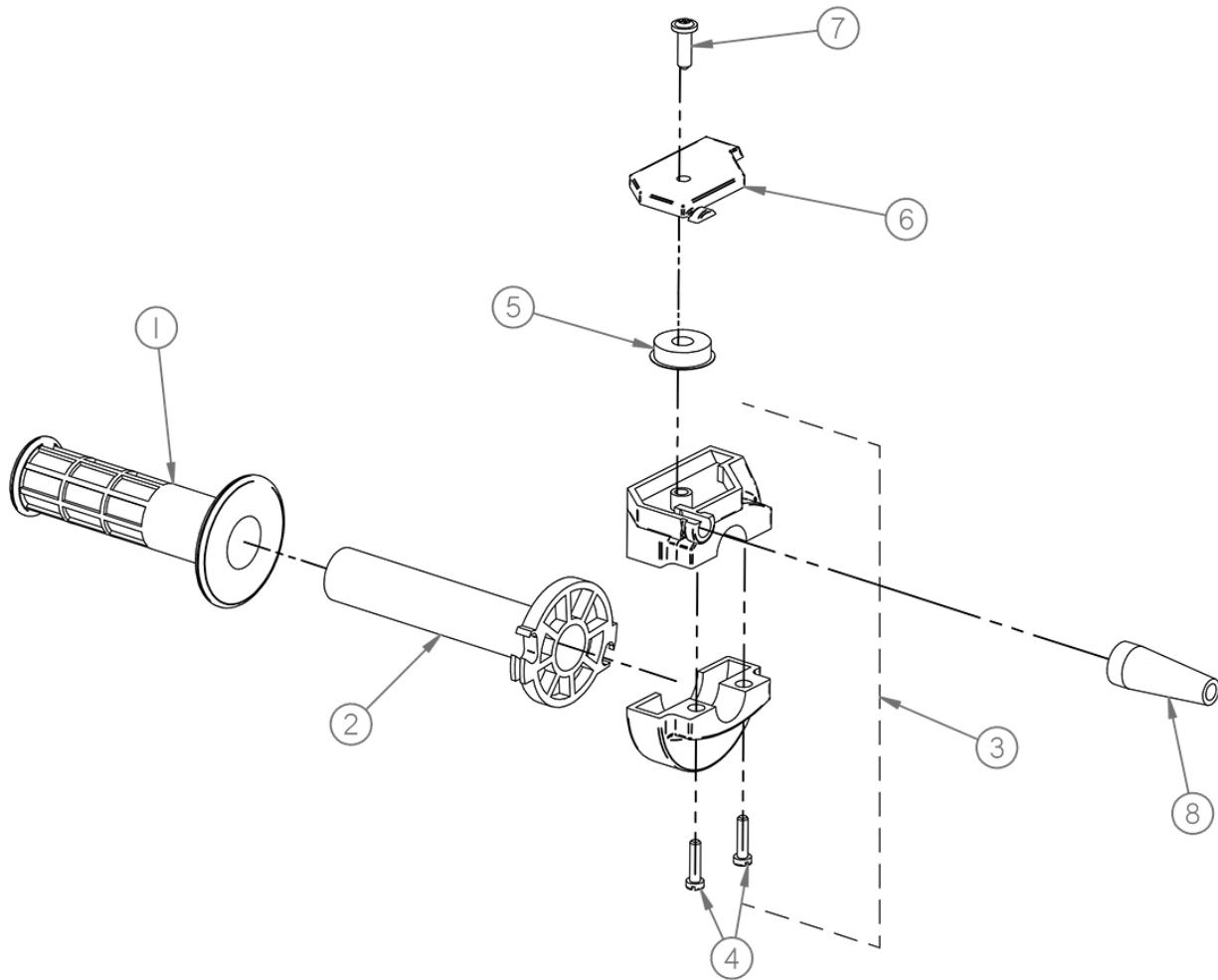




*Replacement Parts Diagram  
 Operator Handle Assembly  
 242H Hole Digger  
 [Beginning with Serial Number 179767]*

Reference Number	Part Number	Description	Quantity
1	242-0050	Bracket, Handle	1
2	242-0070	Bushing, Isolator, Handle	2
3	242-0090	Weldment, Handle, Operator	1
4	242-0060	Clamp, Handle	2
5	310-0030	Assembly, Control, Throttle	1
6	240H-0080PAK2	Pak2, Cable, Throttle, (Includes Ref. 9)	1
7	15040500	HHCS, 1/4-20 X 5/8, ZY	4
8	86040000	Nut, Hex, Flange, 1/4-20, ZY	4
9	242-0210	Spring, Return, Throttle, (Compatible With All 240H & 242H Models)	1

*Replacement Parts Diagram  
 PN: 310-0030 Throttle Control Assembly  
 For Use With  
 200 Series Hole Diggers*



Reference Number	Part Number	Description	Quantity
1	310-0020-030	Grip, Throttle	1
2	310-0030-020-A	Tube, Throttle, W/Grip, (Includes Reference 1)	1
3	310-0030-010-A	Assembly, Body, W/Screws, (Includes Reference 4)	1
4	310-0030-040	Screw, Cheesehead, M5-.8 X 20	2
5	310-0030-070	Sheave, Roller	1
6	310-0030-060	Cover, Top	1
7	310-0030-050	Screw, Self-Tapping	1
8	310-0020-080	Boot, Rubber	1

# Replacement Parts Diagram Machine Decals 242H Hole Digger [Beginning with Serial Number 174809]

**General**  
EQUIPMENT COMPANY

**CUSTOMER SERVICE INFORMATION**  
Avoid injury. Use this product properly. Don't be afraid to ask for help.  
• For technical and application assistance contact your selling dealer.  
• If the product was rented, contact the location from which it was rented.  
• For operator manuals go to: [www.generalequip.com/entry.php](http://www.generalequip.com/entry.php)  
• For product & safety videos go to: [www.youtube.com/user/GeneralEquip](http://www.youtube.com/user/GeneralEquip)  
For further assistance, contact General Equipment Customer Service. There is no charge for this service.

**SG24-5072**  
DECAL, ASSISTANCE

**WARNING**  
This product can expose you to chemicals including grease, lubrication oils, silica dusts and pesticides which are known to the State of California to cause cancer and/or Carbon Monoxide (if gasoline engine powered) which is known to cause both genetic or other reproductive harm. For more information, visit [www.P65Warnings.ca.gov](http://www.P65Warnings.ca.gov).

**GECD-5060**  
DECAL, WARNING, PROP 65

\*ON BACK SIDE OF ENGINE

**⚠ DANGER**  
CARBON MONOXIDE FUMES PRODUCED BY THE ENGINE CAN KILL. DO NOT USE THIS MACHINE INDOORS OR IN ENCLOSED AREAS.

**240-5090**  
DECAL, DANGER

\*ON BACK SIDE OF ENGINE

**CHECK OIL LEVEL**  
ENGINE OIL CAPACITY: 3.2 oz (100mL)  
OIL FILLER CAP/STICK  
CHECK ENGINE OIL LEVEL AS SHOWN, SAE 10W-30, API SJ OR LATER

**240H-5010**  
DECAL, LEVEL, OIL



**GECD-5020**  
DECAL, GENERAL, 1.38 X 7.00

**READ BEFORE STARTING**  
PROPER OPERATOR POSITION REQUIRES THE ENGINE TO BE STARTED WITH YOUR LEFT HAND. CONSULT OPERATOR MANUAL FOR ADDITIONAL INFORMATION.

**240-5020**  
DECAL, STARTING

**⚠ CAUTION**  
HOT

**210-5041**  
DECAL, MUFFLER HOT

**⚠ CAUTION**  
EYE AND EAR PROTECTION REQUIRED

**SP8-5041**  
DECAL, CAUTION, EYE/EAR

THIS MACHINE UTILIZES A 4 STROKE ENGINE. DO NOT MIX OIL WITH GASOLINE. CHECK CRANKCASE OIL LEVEL AS RECOMMENDED IN THE OPERATOR MANUAL.

**240-5030**  
DECAL, 4 STROKE

**⚠ CAUTION**  
AVOID INJURY  
READ AND UNDERSTAND OWNER'S MANUAL BEFORE OPERATING THIS PRODUCT TO AVOID INJURY OR DEATH. PROPER PHYSICAL, SKILLING AND CONDITION TO OPERATE THIS MACHINE.

**210-5021**  
DECAL, CAUTION, AVOID INJURY



**GECD-5050**  
DECAL, FAMILY OWNED, AMERICAN

**Auger-LOK Procedure**

- Stop engine.
- Rotate, drop and lock Auger-LOK pin to fully engage transmission gear.
- Rotate Hole Digger counter-clockwise by hand until auger has been freed.
- Rotate, lift and lock Auger-LOK pin to fully disengage transmission gear.
- Confirm auger is free of obstructions before resuming to dig.

**235-5020**  
DECAL, LOCK, AUGER

**MACHINE WEIGHT LESS AUGER**  
20 LBS (9 Kg)

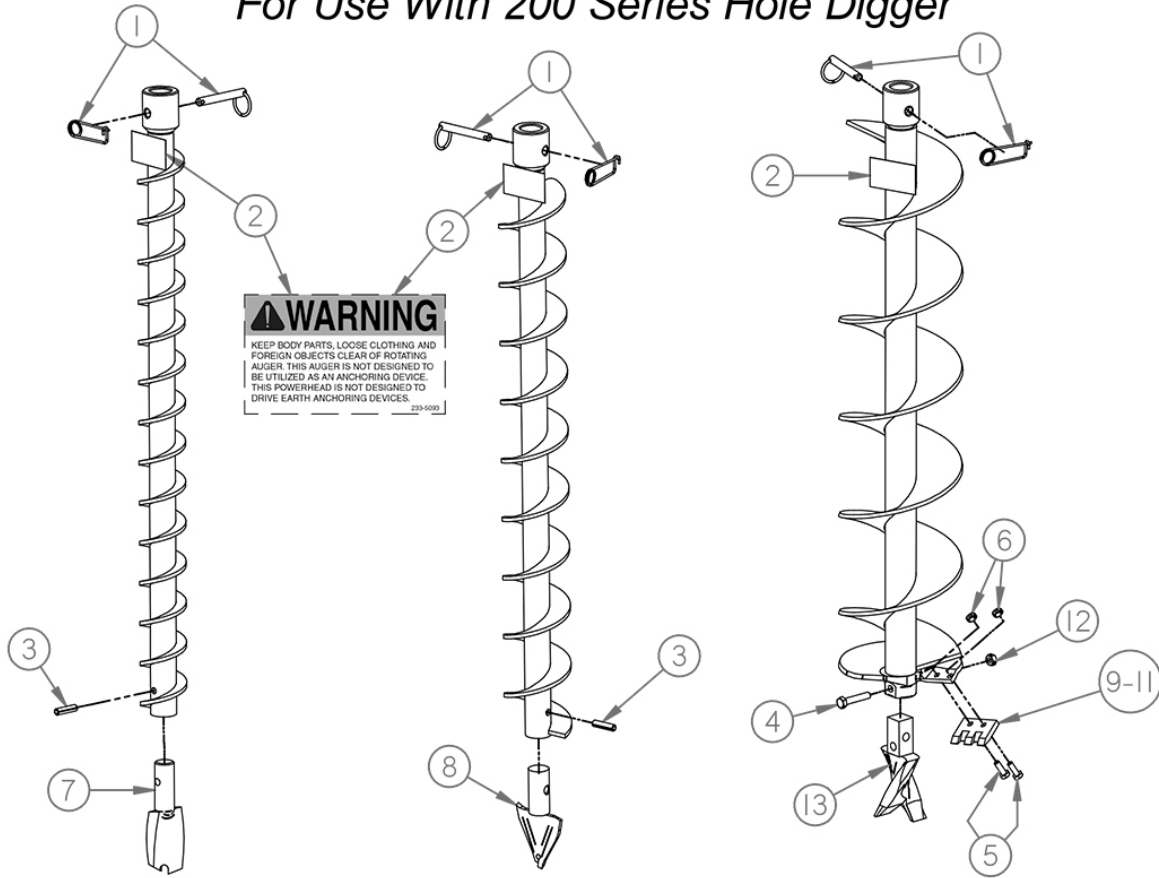
**240-5080**  
DECAL, WEIGHT

\*ON TRANSMISSION LOCK PLATE

**811**  
Know where you're digging. Call before you dig.

**240-5100**  
DECAL, 811

## Replacement Parts Diagram 2350 Series Augers (2 Thru 8 Inch Diameter) 1 Inch Round Drive Connection For Use With 200 Series Hole Digger



2350-2E, 2 Inch Diameter Auger

2350-3E, 3 Inch Diameter Auger

2350-4E, 4 Inch Diameter Auger  
2350-6E, 6 Inch Diameter Auger  
2350-8E, 8 Inch Diameter Auger

Reference Number	Part Number	Description	Application	Quantity
1	2121PAK3	Pak3, Pin, Auger, .375D	All Augers	1
2	233-5093	Decal, Caution, Clear Rotating	All Augers	1
3	20051000	Pin, Roll, 5/16 X 1-1/4	2350-2E, 2350-3E	1
4	15051300	HHCS, 5/16-18 X 1-5/8, ZY	2350-4E Thru 2350-8E	1
5	15040600	HHCS, 1/4-20 X 3/4, ZY	2350-4E Thru 2350-8E	2
6	52040000	Nut, Lock, 2-Way, 1/4-20, ZY	2350-4E Thru 2350-8E	2
7	P801PAK3	Pak3, Bit, Screw, Auger	2350-2E	1
8	P302PAK2	Pak2, Bit, Screw, Auger	2350-3E	1
9	E244PAK3	Pak3, Blade, Earth, 4D	2350-4E	1
10	E246PAK3	Pak3, Blade, Earth, 6D	2350-6E	1
11	E248PAK3	Pak3, Blade, Earth, 8D	2350-8E	1
12	52050000	Nut, Lock, 2-Way, 5/16-18, ZY	2350-4E Thru 2350-8E	1
13	SB26PAK3	Pak3, Bit, Screw, Auger, (Includes Ref. 4 & 12)	2350-4E Thru 2350-8E	1

*THIS PAGE INTENTIONALLY  
LEFT BLANK*